



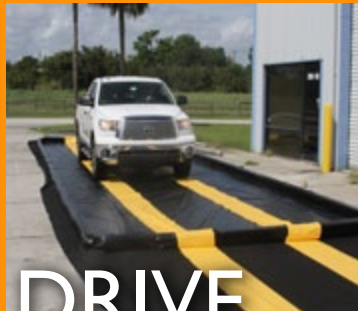
# SECONDARY CONTAINMENT

**Berms and Basins for containing fuel, oil, hydrocarbons, and other chemicals.**



## ANGLE BERM

- Reliable aluminum angle frame.
- Cost-effective containment.
- Folds for easy storage or shipping.



## DRIVE THRU

- Rapid response for leaks or spills.
- Durable with a low profile.
- Drive-thru ready.



## ANGLE & FOAM

- Reliable aluminum framed sides.
- Drive on ready.
- Easy to install and maintain.



## MINI BASIN

- Opens in seconds.
- Quick response for emergencies.
- Effectively holds tools or equipment.



**GEI**  
WORKS

*For more information on OX Secondary Containment products, call us today!*

www.GEIWorks.com  
Phone: 772.646.0597 Fax: 772.589.3343  
Email: info@geiworks.com

# SPECIFICATIONS



## ALUMINUM ANGLE BERM

Short term containment for a variety of hazardous materials.

### Dimensions

### Capacity

6'	(1.80 m)	x	6'	(1.80 m)	x	1'	(0.305 m)	269 gal.	(1,018 L)
8'	(2.40 m)	x	8'	(2.40 m)	x	1'	(0.305 m)	479 gal.	(1,813 L)
10'	(3.05 m)	x	10'	(3.05 m)	x	1'	(0.305 m)	748 gal.	(2,831 L)
10'	(3.05 m)	x	20'	(6.10 m)	x	1'	(0.305 m)	1,496 gal.	(5,663 L)
10'	(3.00 m)	x	50'	(15.2 m)	x	1'	(0.305 m)	3,740 gal.	(14,157 L)
12'	(3.66 m)	x	12'	(3.70 m)	x	1'	(0.305 m)	1,077 gal.	(4,077 L)
12'	(3.66 m)	x	20'	(6.10 m)	x	1'	(0.305 m)	1,496 gal.	(5,663 L)
12'	(3.66 m)	x	26'	(7.90 m)	x	1'	(0.305 m)	2,334 gal.	(8,835 L)
12'	(3.66 m)	x	30'	(9.10m)	x	1'	(0.305 m)	2,693 gal.	(10,194 L)
12'	(3.66 m)	x	36'	(10.9 m)	x	1'	(0.305 m)	3,232 gal.	(12,234 L)
12'	(3.66 m)	x	50'	(15.2 m)	x	1'	(0.305 m)	4,488 gal.	(16,989 L)
14'	(4.27 m)	x	54'	(16.2m)	x	1'	(0.305 m)	5,610 gal.	(21,236 L)
15'	(4.57 m)	x	15'	(4.57 m)	x	1'	(0.305 m)	1,683 gal.	(6371 L)
15'	(4.57 m)	x	50'	(15.2 m)	x	1'	(0.305 m)	5,610 gal.	(21,236 L)
15'	(4.57 m)	x	66'	(20.1 m)	x	1'	(0.305 m)	7,406 gal.	(28,035 L)

Material Options are 22oz. PVC, 36mil PVC, 40mil LLDPE, 30oz. XR5 and 32oz. Polyurethane



## Mini Spill Basin

Use with drums, paint cans, fuel tanks, or for hazmat materials.

### Dimensions

### Capacity

2'	(0.6 m)	x	2'	(0.6 m)	x	4"	(.01 m)	9.9 gal.	(37.4 L)
4'	(1.2 m)	x	4'	(1.2 m)	x	4"	(.01 m)	39 gal.	(150 L)
5'	(1.5 m)	x	5'	(1.5 m)	x	4"	(.01 m)	62 gal.	(234 L)

Material Options are 18oz. PVC, 22oz. PVC, Evaloy and 32oz. Polyurethane



## FOAM WALL BERM

Drive-thru secondary containment for frac tanks, machinery and vehicles.

### Dimensions

### Capacity

6'	(1.80 m)	x	6'	(1.80 m)	x	4"	(0.10 m)	90 gal.	(341 L)
10'	(3.05 m)	x	10'	(3.05 m)	x	4'	(0.10 m)	247 gal.	(935 L)
10'	(3.05 m)	x	20'	(6.0 m)	x	4'	(0.10 m)	494 gal.	(1,870 L)
15'	(4.60 m)	x	20'	(6.0 m)	x	4'	(0.10 m)	748 gal.	(2,831 L)
10'	(3.00 m)	x	40'	(12.2 m)	x	4'	(0.10 m)	997 gal.	(3,774 L)
10'	(3.05 m)	x	50'	(15.24 m)	x	4'	(0.10 m)	1,247 gal.	(4,720 L)
15'	(4.60 m)	x	60'	(18.3 m)	x	4"	(0.10 m)	2,244 gal.	(8,494 L)

Material Options are 22oz. PVC, 36mil PVC, 40mil LLDPE, 30oz. XR5 and 32oz. Polyurethane



## ALUMINUM ANGLE BERM WITH DRIVE-THRU ENDS

Contain hazardous discharge from vehicles and equipment.

### Dimensions

### Capacity

6'	(1.80 m)	x	6'	(1.80 m)	x	1'	(0.305 m)	269 gal.	(1,018 L)
8'	(2.40 m)	x	8'	(2.40 m)	x	1'	(0.305 m)	479 gal.	(1,813 L)
10'	(3.05 m)	x	10'	(3.05 m)	x	1'	(0.305 m)	748 gal.	(2,831 L)
10'	(3.05 m)	x	20'	(6.10 m)	x	1'	(0.305 m)	1,496 gal.	(5,663 L)
10'	(3.00 m)	x	50'	(15.2 m)	x	1'	(0.305 m)	3,740 gal.	(14,157 L)
12'	(3.66 m)	x	12'	(3.70 m)	x	1'	(0.305 m)	1,077 gal.	(4,077 L)
12'	(3.66 m)	x	20'	(6.10 m)	x	1'	(0.305 m)	1,496 gal.	(5,663 L)
12'	(3.66 m)	x	26'	(7.90 m)	x	1'	(0.305 m)	2,334 gal.	(8,835 L)
12'	(3.66 m)	x	30'	(9.10m)	x	1'	(0.305 m)	2,693 gal.	(10,194 L)
12'	(3.66 m)	x	36'	(10.9 m)	x	1'	(0.305 m)	3,232 gal.	(12,234 L)
12'	(3.66 m)	x	50'	(15.2 m)	x	1'	(0.305 m)	4,488 gal.	(16,989 L)
14'	(4.27 m)	x	54'	(16.2m)	x	1'	(0.305 m)	5,610 gal.	(21,236 L)
15'	(4.57 m)	x	15'	(4.57 m)	x	1'	(0.305 m)	1,683 gal.	(6371 L)
15'	(4.57 m)	x	50'	(15.2 m)	x	1'	(0.305 m)	5,610 gal.	(21,236 L)
15'	(4.57 m)	x	66'	(20.1 m)	x	1'	(0.305 m)	7,406 gal.	(28,035 L)

Material Options are 22oz. PVC, 36mil PVC, 40mil LLDPE, 30oz. XR5 and 32oz. Polyurethane

For more complete information on GEI Works products and solutions, visit us on the Web at [www.geiworks.com](http://www.geiworks.com).

Phone: (1+) 772-646-0597 | [info@geiworks.com](mailto:info@geiworks.com)

© 2015 GEI Works  
All rights reserved  
GEI Works terms and conditions apply.

All photos are representative only. Actual products may differ.

Materials and specifications are subject to change without notice. Featured products in photos may include additional equipment or accessories.

GEI Works, Mars, Taurus, Triton, Kraken, Orion, Helios, Centaur, Hydrostar and [geiworks.com](http://geiworks.com), their respective logos, product identity used herein, are trademarks of GEI Works and may not be used without permission.



**GEI**  
WORKS

200-2017-02-01