



## Flexible Water Storage Tanks

### Collapsible Pillow Tanks and Bladders

[GEI flexible water tanks](#) provide economical, dependable water storage solutions from quick deployment in military operations to rainwater harvesting. Multiple sizes and fabric options are available making these tanks ideal for industrial facility, construction site or storage locations.



**GEI**  
WORKS

# Flexible Water Storage Tanks

## Collapsible Pillow Tanks and Bladders

All GEI [drinking water tanks](#) are constructed with FDA and NSF compliant fabrics and industry leading state of the art radio frequency heat welding and vulcanizing techniques. Each water storage tank undergoes a rigorous 4 point inspection before shipping.

Each water tank comes with (2) 2" Bulkhead fittings for fill and discharge. Additional sizes and fitting types are available by request.

- Bulk Storage Options (25 gallons up to 210,000 gallons)
- Easy Installation (unfold and fill)
- Folds up for Storage or Transportation
- Ideal for Temporary Storage Requirements
- Low Profile
- Extreme Temperature and UV exposure

Please discuss required fill and discharge options, support, fasteners, ground anchors, berm/ground liners, shade shelters, etc with a sales specialist to ensure smooth in-field operations.

In addition to our water storage options, collapsible tanks are also available for the storage of fuel. Contact a specialist for details.



1. Stores flat and folds for easy transport
2. Tanks are inflated with air and tested for leaks
3. Standard 2" Bulkhead. 3" and 4" Bulkheads available on request.

# Flexible Water Storage Tanks

## Collapsible Pillow Tanks and Bladders

Capacity US	Capacity Metric	Sizing US WxLxH	Sizing Metric WxLxH
25 gal	94 L	24" x 36" x 8"	0.9 m x 0.6 m x 0.2 m
50 gal	189 L	36" x 52" x 9"	1.3 m x 0.9 m x 0.23 m
75 gal	283 L	42" x 54" x 9"	1.37 m x 1 m x 0.23 m
100 gal	378 L	48" x 66" x 9"	1.68 m x 1.2 m x 0.23 m
150 gal	567 L	60" x 60" x 12"	1.5 m x 1.5 m x 0.3 m
250 gal	946 L	84" x 60" x 14"	2.1 m x 1.5 m x 0.36 m
275 gal	1,040 L	72" x 80" x 16"	1.8 m x 2 m x 0.4 m
300 gal	1,135 L	84" x 66" x 14"	2.1 m x 1.68 m x 0.36 m
500 gal	1,892 L	84" x 108" x 16"	2.7 m x 2.1 m x 0.4 m
600 gal	2,271 L	120" x 84" x 16"	3 m x 2.1 m x 0.4 m
700 gal	2,649 L	114" x 99" x 16"	2.9 m x 2.5 m x 0.4 m
800 gal	3,028 L	72" x 120" x 24"	1.8 m x 3 m x 0.6 m
900 gal	3,405 L	72" x 132" x 24"	1.8 m x 3.35 m x 0.6 m
1,000 gal	3,785 L	108" x 132" x 16"	3.35 m x 2.74 m x 0.4 m
1,500 gal	5,678 L	120" x 168" x 18"	4.27 m x 3 m x 0.46 m
2,000 gal	7,570 L	126" x 174" x 22"	4.4 m x 3.2 m x 0.56 m
2,500 gal	9,463 L	144" x 174" x 24"	4.4 m x 3 m x 0.6 m
3,000 gal	11,356 L	162" x 180" x 24"	4.57 m x 4.1 m x 0.6 m
4,000 gal	15,141 L	168" x 216" x 27"	5.5 m x 4.27 m x 0.7 m
5,000 gal	18,927 L	186" x 234" x 27"	5.94 m x 4.72 m x 0.7 m

Capacity US	Capacity Metric	Sizing US WxLxH	Sizing Metric WxLxH
5500 gal	20,820 L	20' x 17' x 2.25'	6.1 m x 5.2 m x 0.7 m
6000 gal	22,712 L	21' x 18' x 2.25'	6.4 m x 5.5 m x 0.7 m
6500 gal	24,605 L	20.8' x 18' x 2.5'	6.34 m x 5.5 m x 0.76 m
7000 gal	26,498 L	19' x 20' x 2.5'	5.8 m x 5.8 m x 0.76 m
7500 gal	28,391 L	20' x 20' x 2.5'	6.1 m x 6.1 m x 0.76 m
8000 gal	30,283 L	19' x 19' x 3'	5.8 m x 5.8 m x 0.9 m
9000 gal	34,069 L	21' x 20' x 3'	6.1 m x 6.4 m x 0.9 m
9500 gal	35,961 L	21' x 21' x 3'	6.4 m x 6.4 m x 0.9 m
10,000 gal	37,854 L	23' x 21' x 3'	6.4 m x 7 m x 0.9 m
20,000 gal	75,708 L	25' x 33' x 3.5'	10.1 m x 7.6 m x 1.07 m
30,000 gal	113,562 L	32' x 36' x 3.5'	11 m x 9.75 m x 1.07 m
40,000 gal	151,416 L	40' x 37' x 4'	11.3 m x 12.2 m x 1.2 m
50,000 gal	189,271 L	42' x 43' x 4'	12.8 m x 13.1 m x 1.2 m
70,000 gal	264,979 L	48' x 42' x 4'	14.6 m x 12.8 m x 1.2 m
80,000 gal	302,833 L	77' x 30' x 5.5'	23.47 m x 9.1 m x 1.7 m
106,000 gal	401,254 L	88' x 35' x 5.5'	26.8 m x 10.7 m x 1.7 m
125,000 gal	473,176 L	58' x 59' x 5'	17.7 m x 18 m x 1.5 m
150,000 gal	567,812 L	78' x 58' x 6'	23.77 m x 17.7 m x 1.8 m
210,000 gal	794,936 L	75' x 73' x 6'	22.8 m x 22.25 m x 1.8 m

Please Note: Sizes are subject to change without notice. Contact a specialist for details at 1.888.703.9889

### Accessories

Ground Cloth | Covers | Underlayment | Additional Fittings | Repair Kits

For more complete information on GEIWorks products and solutions, visit us on the Web at [www.geiworks.com](http://www.geiworks.com).

Phone: (1+) 772-646-0597 | [info@geiworks.com](mailto:info@geiworks.com)

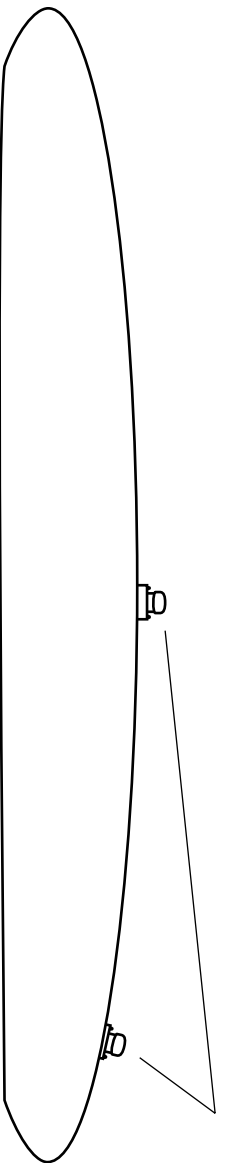
© 2015 GEI Works  
All rights reserved  
GEI Works terms and conditions apply.

All photos are representative only. Actual products may differ.

Materials and specifications are subject to change without notice. Featured products in photos may include additional equipment or accessories.

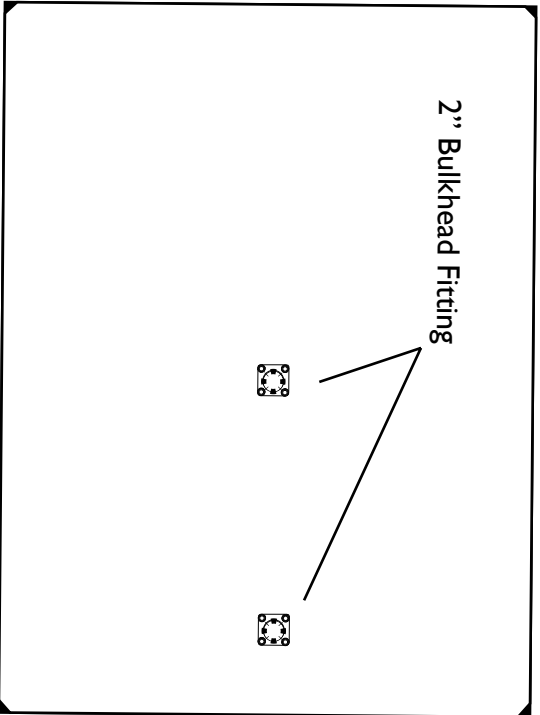
GEI Works, Mars, Taurus, Triton, Kraken, Orion, Helios, Centaur, Hydrostar and [geiworks.com](http://geiworks.com), their respective logos, product identity used herein, are trademarks of GEI Works and may not be used without permission.





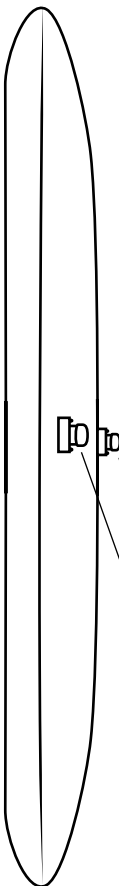
Side View\*

2" Bulkhead Fitting



Top View\*

2" Bulkhead Fitting




End View\*

2" Bulkhead Fitting

\*Drawings depict filled product.

Reference chart on previous page for dimensions.

Drawing for illustrative purposes only. Not to scale.



**GEI**  
WORKS  
Toll Free: 1.888.703.9889  
Phone: (+) 772.646.0597  
info@GEIWorks.com | www.GEIWorks.com

# GEI Flexible Storage Tank

Scale:	Drawing:	Revision:	Date:	By:
--------	----------	-----------	-------	-----