



## **Woven Geotextiles**

High strength permeable fabrics.

Woven geotextiles are permeable fabrics designed for erosion protection, stabilization, and aggregate separation. For use as underlayment, berm protection, rip rap, and other long term applications.



**GEI**  
WORKS

# Woven Geotextile

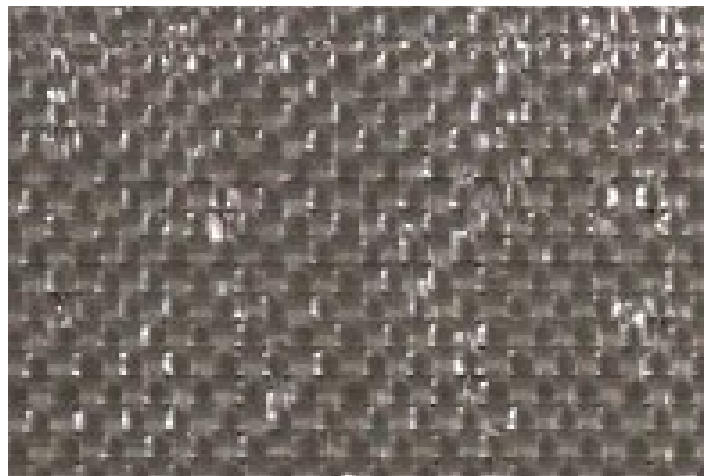
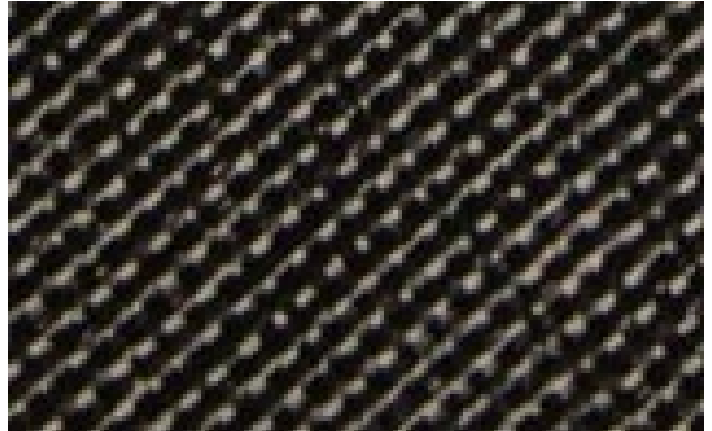
## High strength synthetics.

Woven geotextiles are constructed from a polypropylene fabric that offers a high level of resistance to mildew, insects, and chemicals. All fabrics are fully synthetic fibers woven tightly together, allowing them to maintain long-term support in your project location.

### Applications

- Separation of aggregates
- Rip Rap
- Stabilization
- Cushioning
- Road Pavement
- Erosion Protection
- Underlayment
- Sediment Control
- Berm Protection

Woven geotextiles are designed for extended use under roads, aggregate, and rip rap. They allow drainage while adding an extra layer of support between road subgrades and aggregates, increasing stability and extending the life of the road surface.



# Woven Geotextile

## High strength synthetics.

All geotextiles are sold by the roll. Width and length varies based on the tensile strength of the fabric:

- Woven 150                      15' W x 300' L
- Woven 200                      12.5' W x 432' L                      or                      17.5' W x 309' L
- Woven 315                      12.5' W x 360' L                      or                      17.5' W x 258' L

	ASTM Test Method	Woven 150	Woven 200	Woven 315
Weight	ASTM D5261	3oz/yd <sup>2</sup> (101g/m <sup>2</sup> )	4oz/yd <sup>2</sup> (136g/m <sup>2</sup> )	6oz/yd <sup>2</sup> (203g/m <sup>2</sup> )
Grab Tensile Strength	ASTM D4632	150 lbs (0.667 kN)	200 lbs (0.889 kN)	315 lbs (1.4 kN)
Grab Elongation	ASTM D4632	15%	15%	15%
Trapezoid Tear	ASTM D4533	70 lbs	75 lbs (0.333 kN)	120 lbs (0.533 kN)
Puncture Resistance	ASTM D6241	84 lbs	90 lbs (0.4 kN)	120 lbs (0.533 kN)
Permittivity*	ASTM D4491	0.05 sec -1	0.05 sec -1	0.05 sec -1
Water Flow*	ASTM D4491	34 gpm/ft <sup>2</sup>	4 gpm/ft <sup>2</sup> (163 L/min/m <sup>2</sup> )	4 gpm/ft <sup>2</sup> (163 L/min/m <sup>2</sup> )
Apparent Opening Size	ASTM D4751		40 U.S. Sieve (0.425mm)	40 U.S. Sieve (0.425mm)
UV Resistance	ASTM D4355	70%/500 Hrs	70%/500 Hrs	70%/500 Hrs

\*Calculated at time of manufacturing. Handling, storage, and shipping may change these properties.

For more complete information on GEI Works products and solutions, visit us on the Web at [www.geiworks.com](http://www.geiworks.com).

Toll Free: 1-888-703-9889 | Phone: (+1) 772-646-0597 | [info@geiworks.com](mailto:info@geiworks.com)

© 2018 GEI Works  
All rights reserved  
GEI Works terms and conditions apply.

All photos are representatives only. Actual product may differ than featured.

Materials and specifications are subject to change without notice. Featured products in photos may include additional equipment or accessories. See your GEI Works Dealer for available options.

GEI Works, Mars, Taurus, Triton, Kraken, Orion, Vulcan and [geiworks.com](http://geiworks.com), their respective logos, product identity used herein, are trademarks of GEI Works and may not be used without permission.

