

Ground Anchor Installation

Shoreline Instructions

The ground (shore line) anchor is lightweight, offers robust stability, resists corrosion and is easy to install with the proper tools. It can be an excellent option for both land and underwater anchoring. There are eight simple steps in the installation process:

Note: If the anchor lines are pre-assembled, skip to step 3

Step 1: Cut the rope to the length appropriate for your application.



Step 2: Loop the rope around the anchor point twice and tie the rope to the cable attached to the anchor.



Step 3: Insert a driving rod into the existing hole in the anchor.



Step 4: Holding the rope in one hand, keeping it taut, thrust the driving rod sharply into the ground.



Step 5: Using a post driver or sledge hammer, continue driving the rod and anchor into the ground until the desired depth is reached.

Ground Anchor Installation

Shoreline Instructions



Step 6: Twist the rod so it loosens from the anchor. Pull out the rod once it is completely loose.



Step 7: Set the anchor for maximum loadlock by pulling vertically on the rope with a substantial amount of force. This will shift the anchor into position for full stability.



Step 8: Tie the rope to the anchor point at the end of the turbidity curtain.

Ground Anchor Installation

In Water Instructions

The difference between shoreline installation and in water installation is the drive rod extension. Because the installation is taking place in water, a longer drive rod is necessary. If you already have your driving rod assembled, skip to step 4.

The rod with the flat end will be at the top. The long rod with two holes will be in the middle, and the long rod with one hole will be inserted into the anchor.



Step 1: Insert the rod with the flat top into the middle rod, and line up the holes.



Step 2: When the holes are aligned, push the bolt through both rods and attach the nut.



Step 3: Connect the assembled rod to the remaining rod by lining up the holes and securing the bolt. Now your driving rod is fully assembled. Set aside.



Step 4: Cut the rope to the length appropriate for your application. Loop the rope around the anchor point twice, and tie the rope to the cable attached to the anchor.

Ground Anchor Installation

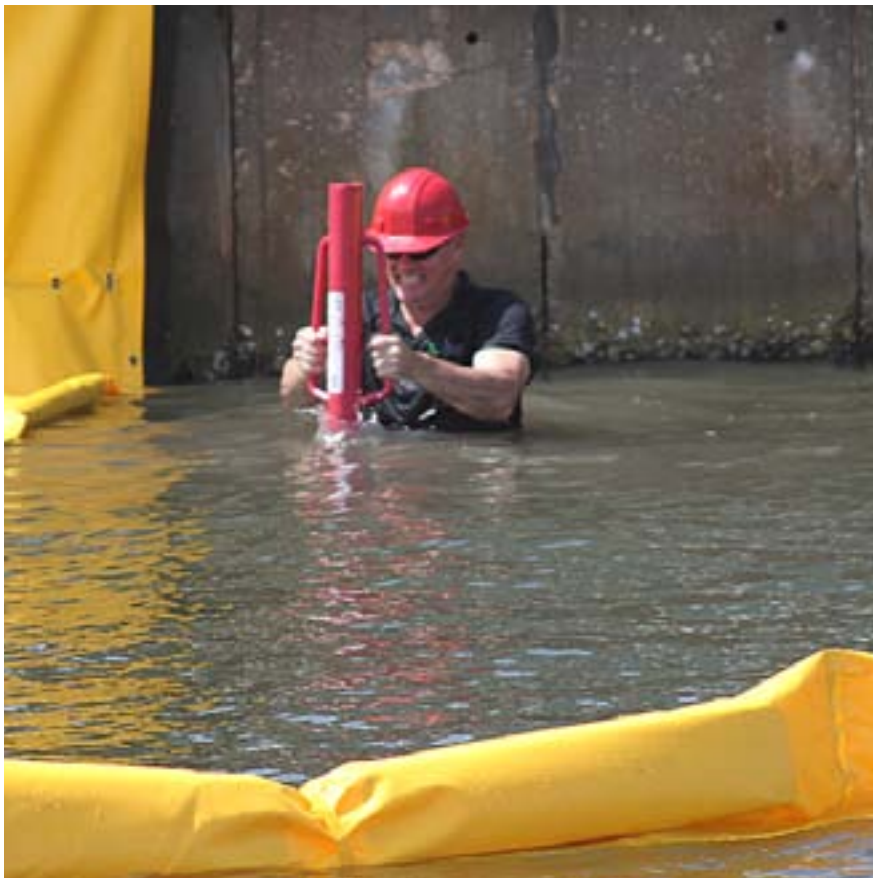
In Water Instructions



Step 5: Insert the driving rod into the existing hole in the anchor.



Step 6: Keeping the rope taut, thrust the driving rod sharply into the ground.



Step 7: Using the post driver, continue driving the rod and anchor into the ground until the desired depth is reached.*

*note: Manufacturer recommended minimum depth for water anchoring is 4 feet (1.2m)

Ground Anchor Installation

In Water Instructions



Step 8: Twist the rod so it loosens from the anchor. Pull out the rod once it is completely loose.



Step 9: Set the anchor for maximum loadlock by pulling vertically on the rope with a substantial amount of force. This will shift the anchor into position for full stability.



Step 10: Tie the rope to the anchor point on turbidity curtain.

Ground Anchor Installation

Anchor Specifications

Dimensions L x W x H (mm) (L x W x H - inches)	Projected Surface Area Square mm (Square inch)	Materials	Typical Load Range	Minimum Driven Depth
171 x 58 x 50 (6.73 x 2.28 x 1.96)	8,200 (12.71)	Aluminum Alloy; Hard Anodised; SG Cast Iron; Aluminum Bronze	2 - 15 + kN (400-3500 lbs)	1.2m

The table above should be read taking into consideration the following points:

- In underwater applications the soil density will be reduced by the density of the water, and therefore holding capacities are reduced by approximately half as stated above.
- The anchor capacity is reliant on the ground conditions in which it is placed.
- In many situations the soil material may be mixed, and the holding capacity may vary.
- All the indicated loads are based on the anchors being driven to the full 'Minimum Driven Depth'.

For more complete information on GEI Works products and solutions, visit us on the Web at www.geiworks.com.

Toll Free: 1-888-703-9889 | Phone: (1+) 772-646-0597 | info@geiworks.com

© 2015 GEI Works
All rights reserved
GEI Works terms and conditions apply.

All photos are representatives only. Actual Product may differ than featured.

Materials and specifications are subject to change without notice. Featured products in photos may include additional equipment or accessories. See your GEI Works Dealer for available options.

GEI Works, Mars, Taurus, Triton, Kraken, Orion, Vulcan and geiworks.com, their respective logos, product identity used herein, are trademarks of GEI Works and may not be used without permission.

