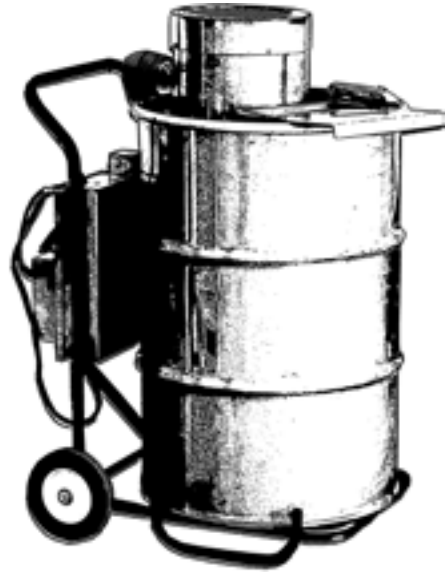
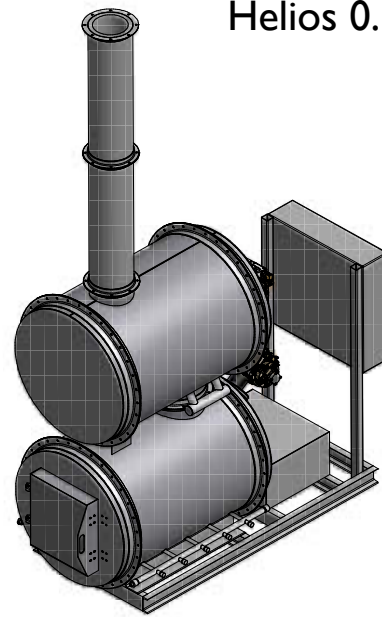


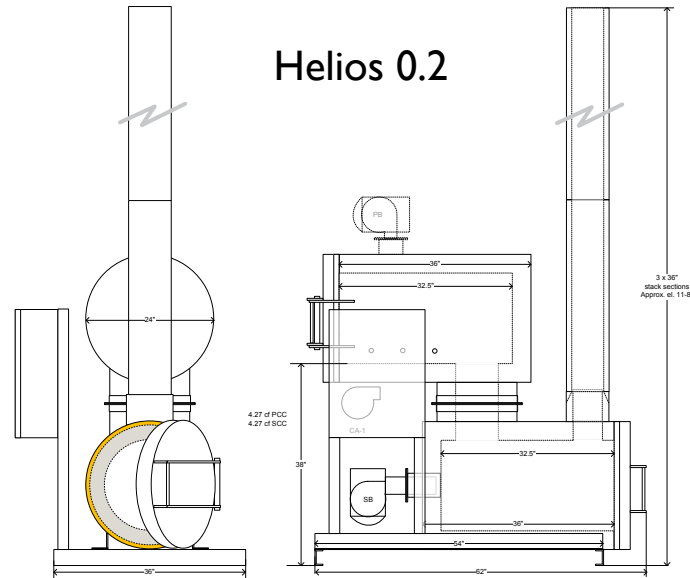
Little Helios Barrel Burner



Helios 0.3



Helios 0.2



For more complete information on GEI Works products and solutions, visit us on the Web at www.geiworks.com.

Phone: (1+) 772-646-0597 | info@geiworks.com

© 2015 GEI Works
All rights reserved
GEI Works terms and conditions apply.

All photos are representatives only. Actual Product may differ than featured.

Materials and specifications are subject to change without notice. Featured products in photos may include additional equipment or accessories. See your GEI Works Dealer for available options.

GEI Works, Mars, Taurus, Triton, Kraken, Orion, Helios, Hydrostar and geiworks.com, their respective logos, product identity used herein, are trademarks of GEI Works and may not be used without permission.

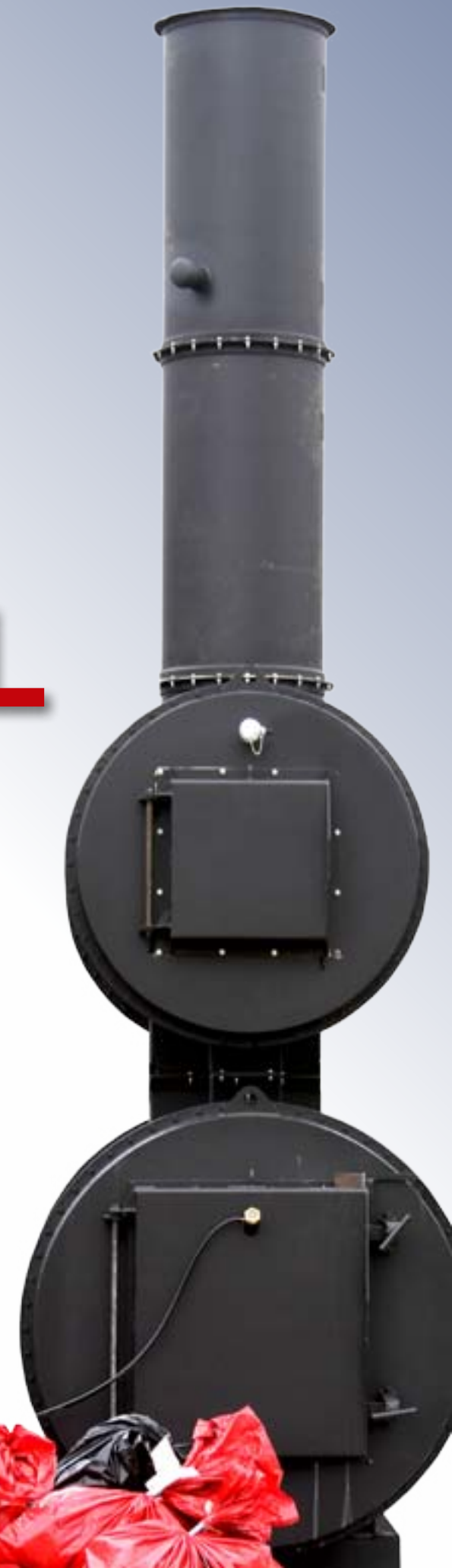


GEI
WORKS

550-2016-11-01



IN-HOUSE DRUG DISPOSAL



Little Helios

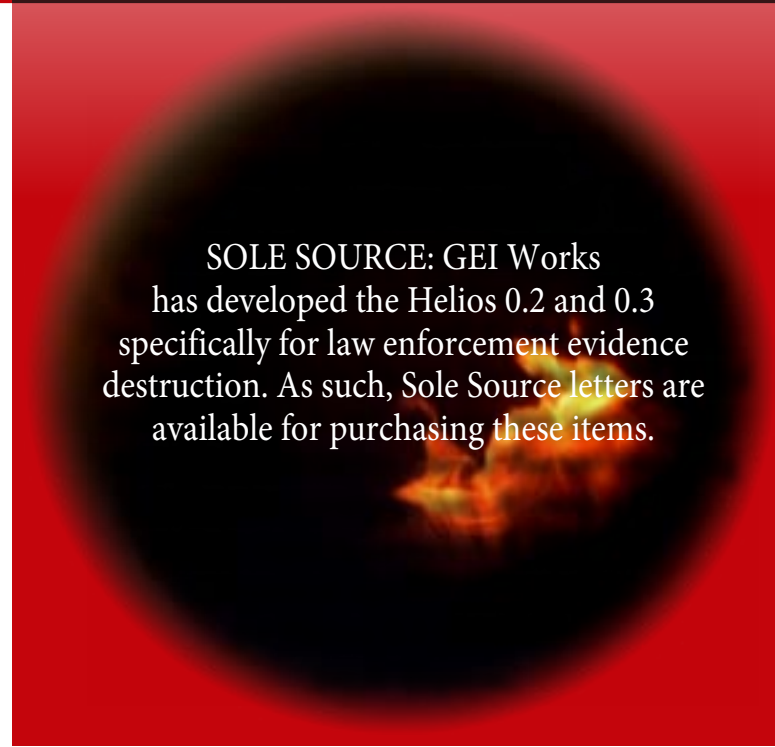
The Little Helios Police Station Drug Barrel Burner is designed to provide law enforcement and police stations with an in-house drug disposal system. Easy to move and operate, these 55 gallon portable drug incinerators are frequently used to help dispose of confiscated drugs, illicit drugs, and narcotics.

Little Helios Portable Burner Specifications

Construction (System Capacity 9-15 lbs)	55 Gallon Stainless Steel Drum w/ Hopper, Lid & Wheel Cart.
Voltage Required	Standard 120V.
Fuel Requirements	Wood or Charcoal.
Dimensions	38" diameter x 26.5" W x 45"H.
Included Items	Stocking Rod. PPE Gloves. Lighter. Cord Retainer. Portable GFCI Plug. Evidence Disposal Boxes.



Helios 0.2



SOLE SOURCE: GEI Works has developed the Helios 0.2 and 0.3 specifically for law enforcement evidence destruction. As such, Sole Source letters are available for purchasing these items.

Helios 0.2 Specifications - *financing available*

System Capacity	80,000 Btu/hr. waste combustion, providing up to 25 lbs/hr processing capacity for solid waste streams with an average gross HHV range of 5500-8500 Btu/lb.
Electrical Required	Single point - 120VAC, 25 amp.
Fuel Required	Liquid petroleum gas.
Primary Chamber	Type: Fixed hearth, with under-fire air injection. Chamber volume: 4.27 cu. ft.
Secondary Chamber:	Type: Thermal oxidizer with 1+ sec. r/t @ 1600°F. Chamber volume: 4.27 cu. ft.
Air Injection	Under-fire & draft induction & exhaust gas cooling.
Systems Control	Siemens PLC with Touch-screen operator interface. To include: Primary & secondary chamber temperature control. Temperature actuated fuel and air control. Burner interface** System status and alarm display. ** Discrete burner monitoring/control & flame supervision.
Exhaust Breaching:	8" o.d. x 6" i.d., dual wall, s.s., insulated stack (6' std).

Helios 0.3

This packaged system is provided fully assembled (except for the stack), factory tested and ready to use. Simply set the stack sections, fill the diesel tank and plug in power, with no special factory commissioning or training required.

Helios 0.3 Specifications - *financing available*

System Capacity	.3 MMBtu/hr waste combustion, providing 30-50 lb/hr processing capacity for solid waste streams with an average gross HHV range of 5500-8500 Btu/lb. Batch Capacity: Approx. 9-10 cu.ft. per 4-6 hr. batch cycle.
Electrical Required	Single point - 120VAC, 25 amp.
Fuel Required	25 gal. - diesel or #2 fuel oil.
Primary Chamber	Type: fixed hearth, with controlled over & under-fire air injection. Chamber volume: 13.5 cu. ft. Hearth Area: 5 sq. ft. Burners capacity: .25 MMBtu/hr. nom. (modulated control). Construction: Skid - 4", 6.25#/ft., A36 channel. Shell - 10 ga., A569 carbon steel. Lining - 3", 3000°F 750 psi, (Plicast 3000KK). Insulation - .25", 550K, 2000°F ceramic fiber.
Secondary Chamber:	Type: Cyclonic thermal oxidizer with 1+ sec. r/t. Chamber volume: 13.5 cu. ft. (std). Burner capacity: .25 MMBtu/hr. (modulated control). Construction: .Shell - 10 ga., A569 carbon steel. Lining - 3", 3000°F 750 psi, (Plicast 3000KK). Insulation - .25", 550K, 2000°F ceramic fiber.
Combustion Air	Supply to burners, under-fire and secondary air injection .33 hp, 120VAC, 60 cfm.
Systems Control	Siemens PLC with Touch-screen operator interface. To include: Primary & secondary chamber temperature control. Temperature actuated fuel and air control. Burner interface** System status and alarm display. Hydraulic systems control (applicable with optional loader). ** Discrete, UL, CSA, FM & IRI burner monitoring/control w/CAD cell flame supervision provided for each burner.
Exhaust Breaching:	10" dual wall, s.s., insulated stack (6' std).

