



**ABSORBENT
BOOMS**

TYPES

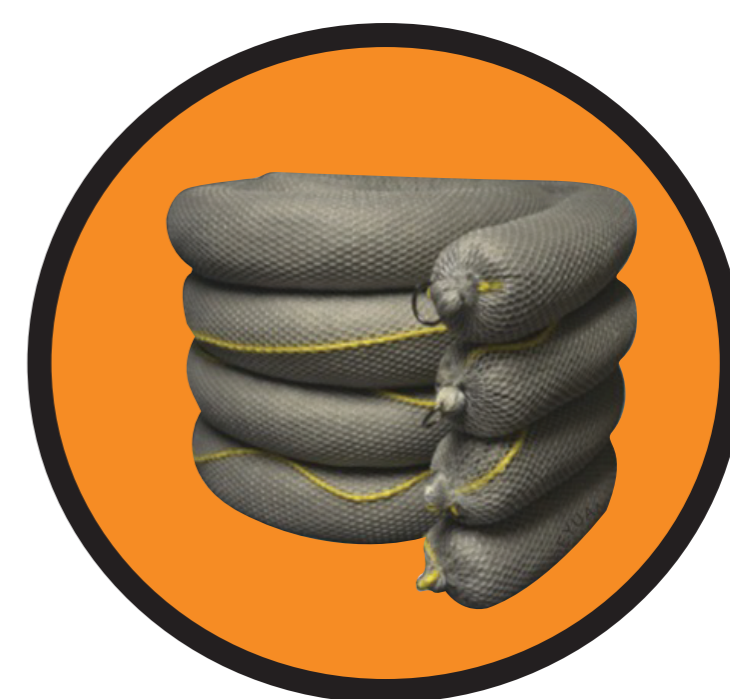
UNIVERSAL



Absorbs most forms of aggressive liquids, acids, and caustics

Outer net of polyester, inner filled with polypropylene and cellulose fiber

**GENERAL
MAINTENANCE**



Absorbs oils, solvents, coolants, water, and non-aggressive liquids

Cellulose fibers encased in a strong polyester outer skin

OIL ONLY



Absorbs oil and hydrocarbons

Tear resistant outer polyester net, filled with polypropylene

SPECIFICATIONS

Type	Dimensions	*Absorbency
Oil Only	5" x 10'	36 gallons
Oil Only	8" x 10'	83 gallons
General Maintenance	5" x 10'	40 gallons
General Maintenance	8" x 10'	100 gallons
Universal	5" x 10'	32 gallons
Universal	8" x 10'	83 gallons

* Approximate capacity

Need bilge booms? Spaghetti booms? Call us!

