



## Steel Mesh Boom

Get out, and stay out!



Steel mesh debris booms are one of the strongest available options for debris exclusion, containment and deflection. Steel mesh booms are perfect for any location that requires increased containment of larger items where the debris is just below the surface or where water currents tend to push debris under a traditional boom line. Made from aluminum or stainless steel frames and expanded metal mesh along with polyethylene floats, these barriers are robust enough to handle items such as logs, timbers, branches and larger floating debris.



GEI  
WORKS

# Steel Mesh Boom

## Get out, and stay out!

Floating and submerged debris created by wind, water currents and waves can damage your facilities and investments. The Orion Steel Mesh Boom by GEI Works, Inc. is a durable, weather proof solution for some of these common nuisances:

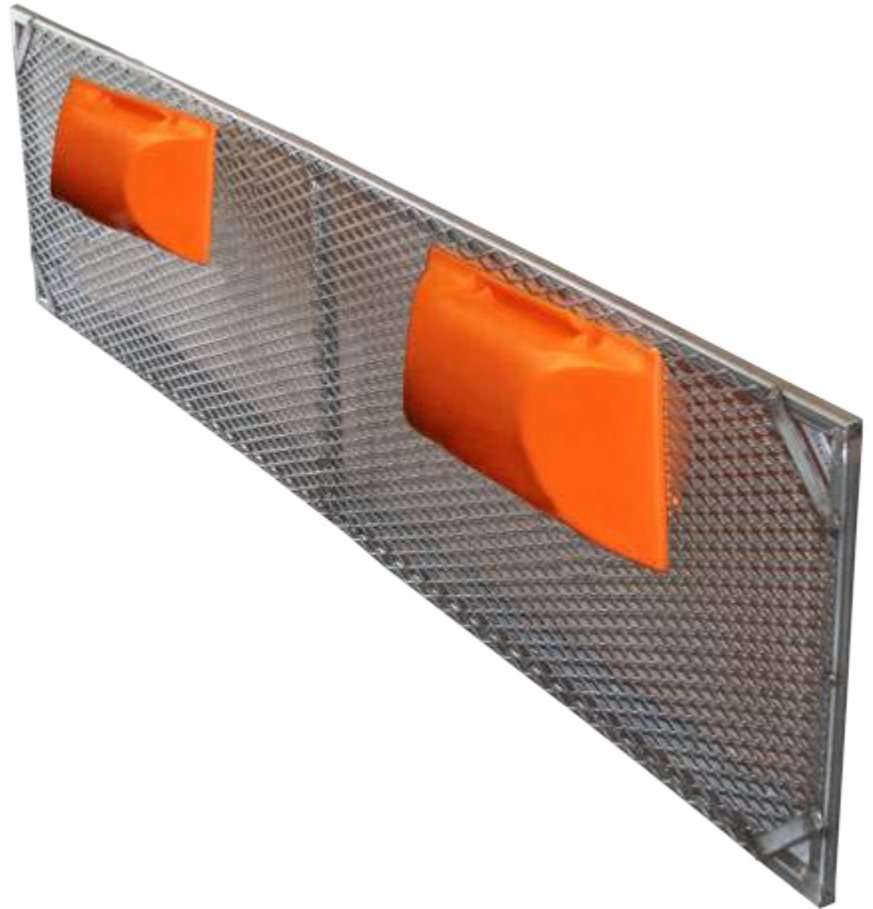
- Trees, branches and logs.
- Cans, bottles, plastic and glass containers.
- Control and containment of vegetation.
- Floating ice.
- Submerged (just under the surface) debris.

### Applications

- Boat dock protection.
- Power plants.
- Rivers.
- Lakes.
- Intakes.
- Dams.
- Marinas & harbors.
- Public safety around unauthorized areas.

### Suggested Accessories

Cables, chains, shackles, connectors, reflectors, tow bridles, tidal compensators and marker lights.



# Steel Mesh Boom

Get out, and stay out!

## Specifications

MODEL	Aluminum	Stainless Steel
Panel Length	8' (2.4 m) Sections	8' (2.4 m) Sections
Depths	2', 3' or 4' (0.6 m, 0.9 m, or 1.2 m)	2', 3' or 4' (0.6 m, 0.9 m, or 1.2 m)
Flotation	HDPE Foam Filled Floats	HDPE Foam Filled Floats



For more complete information on GEI Works products and solutions, visit us on the Web at [www.geiworks.com](http://www.geiworks.com).

Phone: (1+) 772-646-0597 | [info@geiworks.com](mailto:info@geiworks.com)

© 2015 GEI Works

All rights reserved

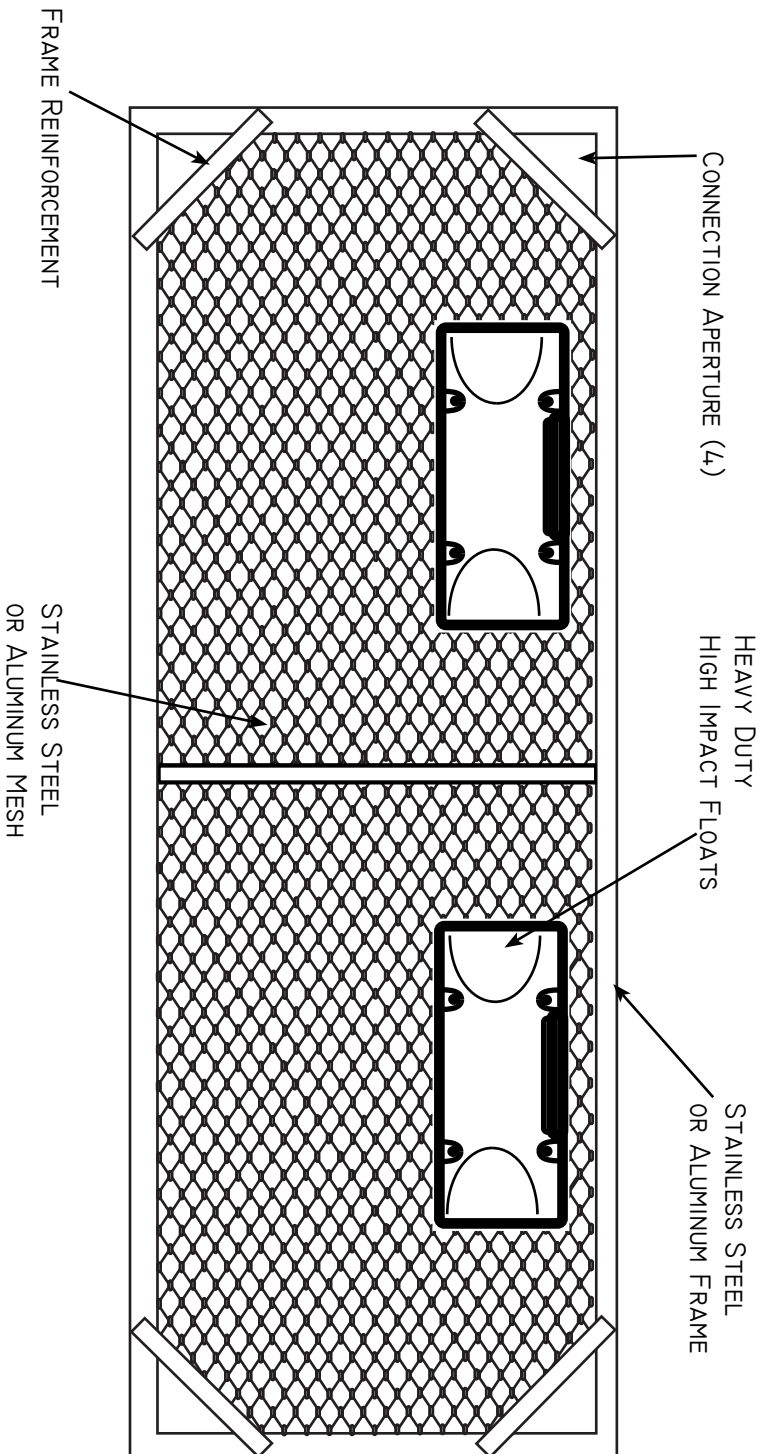
GEI Works terms and conditions apply.

All photos are representatives only. Actual product may differ than featured.

Materials and specifications are subject to change without notice. Featured products in photos may include additional equipment or accessories. See your GEI Works Dealer for available options.

GEI Works, Mars, Taurus, Triton, Kraken, Orion, Helios, Centaur, Hydrostar and [geiworks.com](http://geiworks.com), their respective logos, product identity used herein, are trademarks of GEI Works and may not be used without permission.





**GEI**  
WORKS

772.646.0597  
www.GEIWorks.com

# Orion Steel Mesh Boom 8'x2' Sections

Scale:	Drawing:	Revision:	Date:	By:
--------	----------	-----------	-------	-----

Drawing for illustrative purposes only. Not to scale. © 2016 Copyright GEI Works, Inc.