



Helios

Fixed Hearth Incinerators

Helios

The Helios Fixed Hearth Incinerator is a great way to safely dispose of drugs, trash, medical waste and other solid waste streams. The technology for these units is trusted by hospitals, waste disposal facilities and police stations to effectively dispose of unwanted materials.



GEI
WORKS

Helios Incinerators

Helios Evidence Disposal Incinerators are self contained and have fully automated dual chamber units that work to incinerate waste before it enters the atmosphere.

The Helios Fixed Hearth Incinerator is built with Primary and Secondary Burn Chambers allowing for bulk disposal. Dual chamber systems work by first incinerating waste in the primary chamber, then further oxidizing by-products from the primary chamber in the secondary chamber.

How it Works:

Load the Primary Chamber

The Primary Chamber should be free of existing ash prior to loading. Then load to no more than 1/3 of the capacity and secure the door.

Start the System

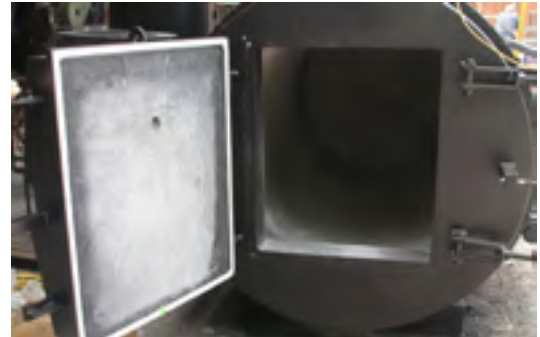
Prior to starting, check the control system panel to make sure that both the primary and secondary chambers are on. Start the system through the control panel interface by pressing the large “start” button.

Incinerate Materials

Systems will begin by adding in a 60 second “fresh air purge.” After the purge, chambers will pre-heat to their required temperatures. Once starting conditions are reached, the primary chamber will ignite and begin the burn process. Materials will then be incinerated first in the primary chamber. Combustible emissions not consumed in the initial stage will then be incinerated in the secondary chamber prior to venting from the stack.

Cool Down and Stop

Once the process is finished, the unit will enter a cool down phase. This phase will automatically trigger the shut down cycle.



Helios

Fixed Hearth Incinerators

| | Helios 0.3 [^] | Helios 0.5 | Helios 1.0 | Helios 1.5 |
|---|--|--|--|--|
| System Capacity Waste streams with and average gross HHV range of 5500-8500 Btu/lb. | 0.3 MMBtu/hr waste combustion. 30-50lbs/hr processing capacity. | 0.5 MMBtu/hr waste combustion. 55-85lbs/hr processing capacity. | 1.0 MMBtu/hr waste-combustion. 140-200lbs/hr processing capacity. | 1.5 MMBtu/hr waste combustion. 175-250lbs/hr processing capacity. |
| Primary Chamber / Fixed Hearth | | | | |
| Chamber Volume | 13.5 cubic ft. | 25.2 cubic ft. | 66.8 cubic ft. | 86 cubic ft. |
| Hearth Area | 5 square ft. | 8 square ft. | 10 square ft. | 14 square ft. |
| Burner Capacity | 0.25 MMBtu/hr nom | 0.4 MMBtu/hr. (Hi-Lo-Off Control) | 0.278-0.45 MMBtu/hr. (Hi-Lo-Off Control) | 0.28-0.45 MMBtu/hr. (Hi-Lo-Off Control) |
| Secondary Chamber | | | | |
| Type | Cyclonic Thermal Oxidizer with 1+ sec. r/t | Cyclonic Thermal Oxidizer with 1+ sec. r/t | Cyclonic Thermal Oxidizer with 1+ sec. r/t @ 1600°F (850°C) | Cyclonic Thermal Oxidizer with 1+ sec. r/t @ 1600°F (850°C) |
| Chamber Volume | 13.5 cubic ft. | 17.1 cubic ft. | 39.15 cubic ft. | 51 cubic ft. |
| Burner Capacity | 0.25 MMBtu/hr nom | 0.5 MMBtu/hr | 1 MMBtu/hr (modulating, excess air control) | 0.35-1.12 MMBtu/hr. (modulating, excess air control) |

[^] Note: The Helios 0.3 is designed as an operator-friendly "plug and play" unit which does not require formal start up and commissioning by a certified technician.

For more complete information on GEI Works products and solutions, visit us on the Web at www.geiworks.com.

Toll Free: 1-888-703-9889 | Phone: (1+) 772-646-0597 | info@geiworks.com

© 2015 GEI Works
All rights reserved
GEI Works terms and conditions apply.

All photos are representatives only. Actual Product may differ than featured.

Materials and specifications are subject to change without notice. Featured products in photos may include additional equipment or accessories. See your GEI Works Dealer for available options.

GEI Works, Mars, Taurus, Triton, Kraken, Orion, Helios and geiworks.com, their respective logos, product identity used herein, are trademarks of GEI Works and may not be used without permission.

These models are designed to provide fast, easy and hassle-free disposal. Most set up for these units involves filling the gas tank and plugging the unit into a power source.

What can be placed in these incinerators?

This dual-chamber system is equipped to handle several different materials including the following:

- Medical Waste Materials (such as Needles, Pads, etc.)
- Equipment from Labs, Dental Offices and Health Organization
- Solid Waste Materials
- Prescription Drugs
- Confiscated Materials
- Trash (alternative to an open pit burn)
- Regulated waste (i.e. Internationally Regulated USDA/CBP waste)

Need more information?
Not sure if this unit is right for you?
Give us a call at **772-646-0597** or toll free at **888-703-9889** to discuss your disposal requirements.



GEI
WORKS

500-2016-06-1